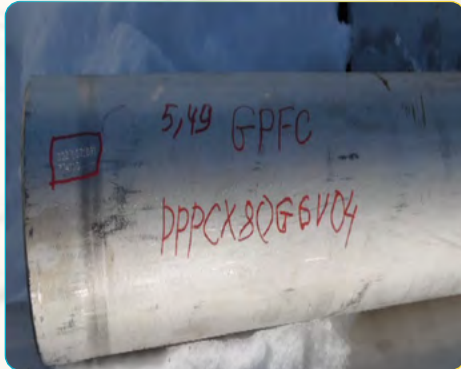


## 04. LINEPIPES AND PIPING



MATERIAL	PPPCX80G6V04
Description	PPPCX80G6V04 6.000, Pipe, A312TP304*, SMLS, Sch40S, BBE, Pipe Dual Grade Stainless Steel Per ASTM A312 Grade TP304/304L Schedule 40S Seamless Bevelled Both Ends Per ANSI B36.19 Material Shall Meet the Requirements of NACE MR0175 To be Supplied in Double Random Lengths
Purpose	This specification applies to the design, and installation of new process piping (ASME B31.3)
Where used	It is used to upgrade KPO facilities
Category of goods	PIPING

MATERIAL	PPPCX80G6V03
Description	PPPCX80G6V03 4.000, Pipe, A312TP304*, SMLS, Sch40S, BBE, Pipe Dual Grade Stainless Steel Per ASTM A312 Grade TP304/304L Schedule 40S Seamless Bevelled Both Ends Per ANSI B36.19 Material Shall Meet the Requirements of NACE MR0175 To be Supplied in Double Random Lengths
Purpose	This specification applies to the design, and installation of new process piping (ASME B31.3)
Where used	It is used to upgrade KPO facilities
Category of goods	PIPING

## 04. LINEPIPES AND PIPING



MATERIAL	PPPCH9050107
Description	PPPCH905010712.000, Pipe, A333-6, SMLS, Std Wt, BBE, Pipe Carbon Steel Per ASTM A333 Grade 6 Standard Weight Seamless Bevelled Both Ends Per ANSI B36.10 To be Supplied in Double Random Lengths
Purpose	This specification applies to the design, and installation of new process piping (ASME B31.3)
Where used	It is used to upgrade KPO facilities
Category of goods	PIPING

MATERIAL	PPPCH9050106
Description	PPPCH905010610.000, Pipe, A333-6, SMLS, Std Wt, BBE, Pipe Carbon Steel Per ASTM A333 Grade 6 Standard Weight Seamless Bevelled Both Ends Per ANSI B36.10 To be Supplied in Double Random Lengths
Purpose	This specification applies to the design, and installation of new process piping (ASME B31.3)
Where used	It is used to upgrade KPO facilities
Category of goods	PIPING



## 04. LINEPIPES AND PIPING



MATERIAL	PPPCH9050105
Description	PPPCH9050105 8.000, Pipe, A333-6, SMLS, Std Wt, BBE, Pipe Carbon Steel Per ASTM A333 Grade 6 Standard Weight Seamless Bevelled Both Ends Per ANSI B36.10 To be Supplied in Double Random Lengths
Purpose	This specification applies to the design, and installation of new process piping (ASME B31.3)
Where used	It is used to upgrade KPO facilities
Category of goods	PIPING

MATERIAL	PPPCH9050103
Description	PPPCH9050103 4.000, Pipe, A333-6, SMLS, Std Wt, BBE, Pipe Carbon Steel Per ASTM A333 Grade 6 Standard Weight Seamless Bevelled Both Ends Per ANSI B36.10 To be Supplied in Double Random Lengths
Purpose	This specification applies to the design, and installation of new process piping (ASME B31.3)
Where used	It is used to upgrade KPO facilities
Category of goods	PIPING

## 04. LINEPIPES AND PIPING



MATERIAL	PPPC7Q0Z7006
Description	12.000, PIPE, A 182 GR-F22 MOD, 2.52 INCH WALL, BBE
Purpose	F22 Modified is a specialized modified material developed specifically for the Unit-2 Gas Reinjection system. The piping classes have been developed as a replacement of the original Nuovo Pignone Piping Material Classes which were based on API 5L X60 piping material. The welds in this piping system was found not meeting the hardness requirements for sour service, which necessitated the replacement of these piping systems by an alternate material
Where used	UNIT-2 Gas Reinjection system
Category of goods	PIPING

MATERIAL	PPPC7Q0X7004
Description	6.000, PIPE, A 182 GR-F22 MOD, 1.38 INCH WALL, BBE
Purpose	F22 Modified is a specialized modified material developed specifically for the Unit-2 Gas Reinjection system. The piping classes have been developed as a replacement of the original Nuovo Pignone Piping Material Classes which were based on API 5L X60 piping material. The welds in this piping system was found not meeting the hardness requirements for sour service, which necessitated the replacement of these piping systems by an alternate material
Where used	Unit-2 Gas Reinjection system
Category of goods	PIPING



## 04. LINEPIPES AND PIPING



MATERIAL	PPPC7Q0U7003
Description	4.000, PIPE, A 182 GR-F22 MOD, 1.00 INCH WALL, BBE
Purpose	F22 Modified is a specialized modified material developed specifically for the Unit-2 Gas Reinjection system. The piping classes have been developed as a replacement of the original Nuovo Pignone Piping Material Classes which were based on API 5L X60 piping material. The welds in this piping system was found not meeting the hardness requirements for sour service, which necessitated the replacement of these piping systems by an alternate material
Where used	Unit-2 Gas Reinjection system
Category of goods	PIPING

MATERIAL	PPPC7Q0B7005
Description	8.000, PIPE, A 182 GR-F22 MOD, SCH 120, BBE
Purpose	F22 Modified is a specialized modified material developed specifically for the Unit-2 Gas Reinjection system. The piping classes have been developed as a replacement of the original Nuovo Pignone Piping Material Classes which were based on API 5L X60 piping material. The welds in this piping system was found not meeting the hardness requirements for sour service, which necessitated the replacement of these piping systems by an alternate material
Where used	Unit-2 Gas Reinjection system
Category of goods	PIPING

## 04. LINEPIPES AND PIPING



MATERIAL	PPPC7Q0B7004
Description	6.000, PIPE, A 182 GR-F22 MOD, SCH 120, BBE
Purpose	F22 Modified is a specialized modified material developed specifically for the Unit-2 Gas Reinjection system. The piping classes have been developed as a replacement of the original Nuovo Pignone Piping Material Classes which were based on API 5L X60 piping material. The welds in this piping system was found not meeting the hardness requirements for sour service, which necessitated the replacement of these piping systems by an alternate material
Where used	Unit-2 Gas Reinjection system
Category of goods	PIPING

MATERIAL	271130
Description	LINEPIPE: 16 INCH, (406.4 MM) OD 7,92 MM WT. API 5L Gr. B PSL1 SMLS, SUPPLIED EXTERNALLY COATED WITH FBE IN ACCORDANCE WITH COMPANY SPECIFICATION KPO-00-PLS-SPC-00019-E (LATEST REVISION). INSPECTION CERTIFICATE 3.2 EN 10204
Purpose	The 16" Line Pipe is required Industrial Water Pipeline which supplies water to UNITS. The 16" Line Pipe properties comply with international standard requirements API 5L, PSL 1
Where used	Water Supply System
Category of goods	PIPELINES



## 04. LINEPIPES AND PIPING



MATERIAL	257750
Description	LINEPIPE: 12.75 INCH (323.9 MM) OD, 35 MM WT, API-5L X60, BBE, SMLS, FBE COATED; PIPE IN ACCORDANCE WITH SPECIFICATION KPO-00-PLS-SPC-00003-ER (Latest rev). PIPE TO MEET THE REQUIREMENTS OF NACE MR 0175/ISO 5156 PART2. SUPPLIED EXTERNALLY FBE COATED IN ACCORDANCE WITH COMPANY SPECIFICATION KPO-00-PLS-SPC-00019-E (Latest rev). INSPECTION CERTIFICATE 3.2 EN10204
Purpose	The 12.75" Line Pipe is required for the Unit-2 Gas Reinjection System. The 12" Line Pipe properties comply with international standard requirements API 5L and additional Company requirements for sour service Special requirements were developed for Line Pipe material X60 with taking into account the high H2S value, which makes it possible to control the final hardness of the pipe welds. This reduces the risk of SSC cracking
Where used	UNIT-2 Gas Re Injection System
Category of goods	PIPELINES

## 04. LINEPIPES AND PIPING



MATERIAL	238255
Description	LINEPIPE: 24 INCH, (609.6 MM) OD, 23.8 MM WT, API-5L X60, SMLS, IN ACCORDANCE WITH SPECIFICATION KPO-00-PLS-SPC-00003-ER AND DATA SHEET AP/D/16/0583-D0017 (Latest Rev.), PIPE TO MEET THE REQUIREMENTS OF NACE MR 0175/ISO 15156 PART 2. INSPECTION CERTIFICATE 3.2 EN 10204. SUPPLIED BARE WITH TEMPORARY RUST PROTECTION
Purpose	The 24" Line Pipe, bare is required for the above ground section of the pipeline at UNIT-2 and UNIT-3, Tie-in 108 Area The entire pipeline system supplies dry gas from UNIT-3 Area 108 to UNIT-2. The 24" Line Pipe properties comply with international standard requirements API 5L and additional Company requirements for sour service Special requirements were developed for Line Pipe material X60 with taking into account the high H2S value, which makes it possible to control the final hardness of the pipe welds. This reduces the risk of SSC cracking
Where used	UNIT-2 Gas Re Injection System
Category of goods	PIPELINES



## 04. LINEPIPES AND PIPING



MATERIAL	232752
Description	LINEPIPE: 20 INCH, (508.0 MM) OD, 17.5 MM WT, API-5L X60, SMLS, IN ACCORDANCE WITH SPECIFICATION KPO-00-PLS-SPC-00003-ER AND DATA SHEET KPO-40-PLS-DTS-00013-E (latest revision). PIPE TO MEET THE REQUIREMENTS OF NACE MR 0175/ISO 15156 PART 2. SUPPLIED EXTERNALLY FBE COATED IN ACCORDANCE WITH COMPANY SPECIFICATION KPO-00-PLS-SPC-00019-E (Latest rev). INSPECTION CERTIFICATE 3.2 EN 10204
Purpose	The 20" Line Pipe is required for supply sour gas from KPC to UNIT-2 The 20" Line Pipe properties comply with international standard requirements API 5L and additional Company requirements for sour service Special requirements were developed for Line Pipe material X60 with taking into account the high H2S value, which makes it possible to control the final hardness of the pipe welds. This reduces the risk of SSC cracking
Where used	UNIT-2 Gas Re Injection System
Category of goods	PIPELINES

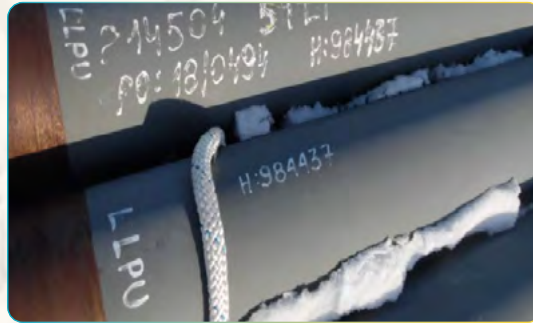
## 04. LINEPIPES AND PIPING



MATERIAL	232749
Description	LINEPIPE: 24 INCH, (609.6 MM) OD, 23.8 MM WT, API-5L X60, SMLS, IN ACCORDANCE WITH SPECIFICATION KPO-00-PLS-SPC-00003-E (Latest rev.) AND DATA SHEET AP/D/16/0583-D0017 (Latest Rev.), PIPE TO MEET THE REQUIREMENTS OF NACE MR 0175/ISO 15156 PART 2. SUPPLIED EXTERNALLY FBE COATED IN ACCORDANCE WITH COMPANY SPECIFICATION KPO-00-PLS-SPC-00019-E (Latest rev). INSPECTION CERTIFICATE 3.2 EN 10204
Purpose	The 24" Line Pipe is required for supply dry gas from UNIT-3 Area 108 to UNIT-2. The 24" Line Pipe properties comply with international standard requirements API 5L and additional Company requirements for sour service Special requirements were developed for Line Pipe material X60 with taking into account the high H2S value, which makes it possible to control the final hardness of the pipe welds. This reduces the risk of SSC cracking
Where used	UNIT-2 Gas Re Injection System
Category of goods	PIPELINES



## 04. LINEPIPES AND PIPING



MATERIAL	214504
Description	LINEPIPE: 8.625 Inch, (219.03 mm) OD, 38.0 mm WT, API-5L X60, SMLS, FBE coated; Pipe accordance with Specification KPO-00-PLS-SPC-00003-ER, (latest revision) and Data Sheet KPO-8B-PLS-DTS-00003-E, (latest revision). Pipe to meet the requirements of NACE MR 0175/ISO 15156 Part 2. Supplied Externally FBE Coated in Accordance with Company Specification 23858-40L-3PS-W000-00002 (latest revision). Inspection Certificate 3.2 EN 10204
Purpose	The heavy wall thickness 8" Line Pipe is required for the Unit-2 Gas Reinjection System. The 8" Line Pipe properties comply with international standard requirements API 5L and additional Company requirements for sour service Special requirements were developed for Line Pipe material X60 with taking into account the high H2S value, which makes it possible to control the final hardness of the pipe welds. This reduces the risk of SSC cracking
Where used	UNIT-2 Gas Re Injection System
Category of goods	PIPELINES

MORE INFORMATION IS AVAILABLE AT:



For more information regarding Data Sheets  
of goods and other requests, please contact at  
[OpenDayEvent@kpo.kz](mailto:OpenDayEvent@kpo.kz)